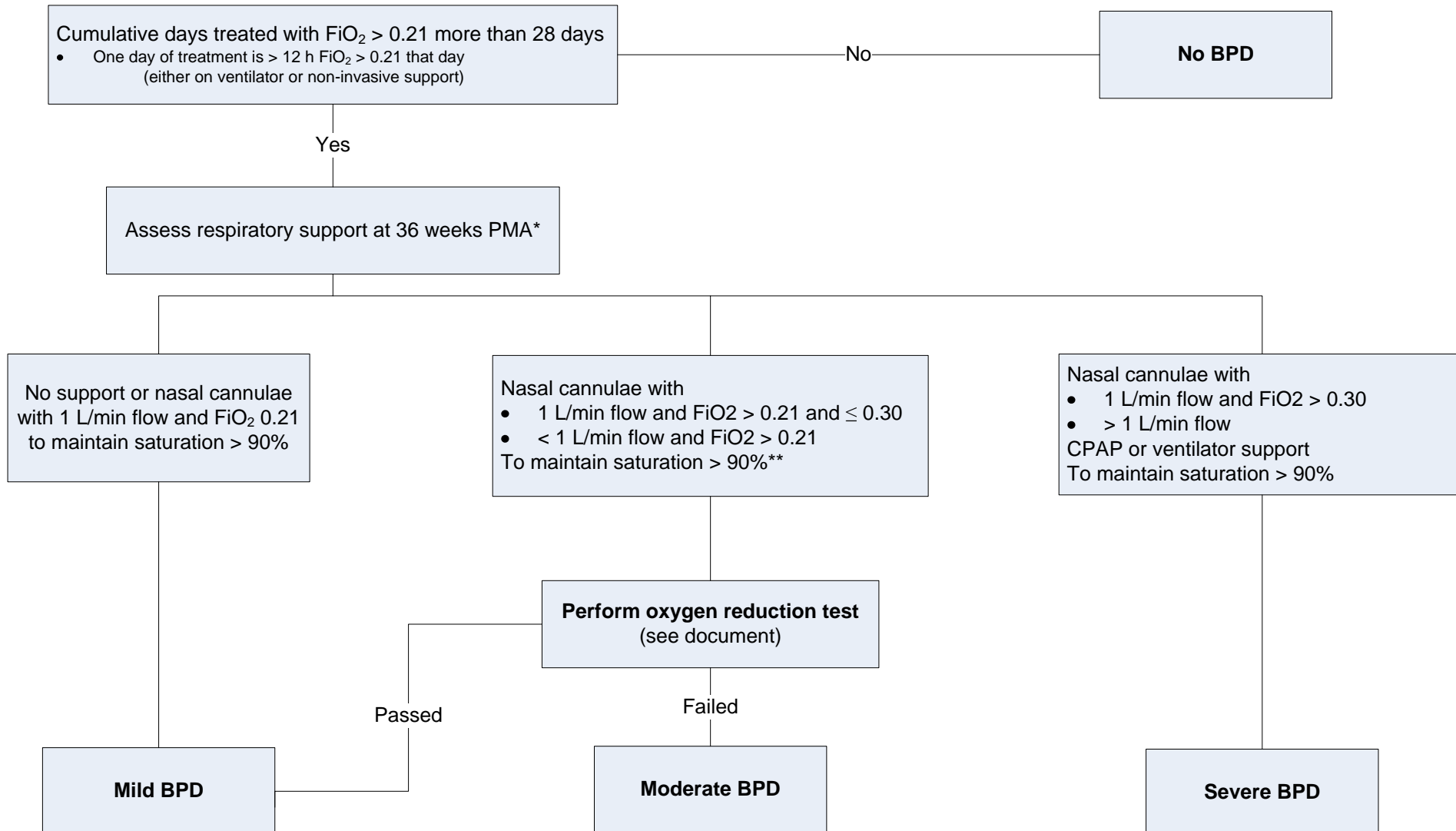


Definition diagnosis BPD for the SToP-BPD study

22-11-2012



Adjusted from Jobe et al. Am J Respir Crit Care Med Vol 163. pp 1723–1729, 2001



* should not reflect an “acute” event, but should rather reflect the infant’s usual daily therapy for several days preceding and following 36 wk PMA,
 ** or 1 liter and $\text{FiO}_2 > 0.3$ to maintain saturation $> 96\%$